

Beam

Shropshire
Telford and Wrekin

EMOTIONAL WELLBEING DROP IN FOR
CHILDREN AND YOUNG PEOPLE UNDER 25,
PARENTS, CARERS & PROFESSIONALS

HOW TO FIND US & HOW BEAM LOOKS

service provided by

**The
Children's
Society**

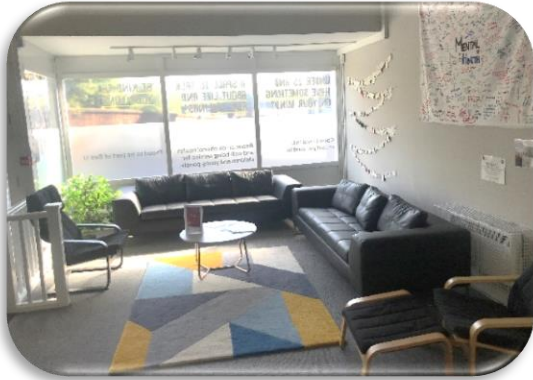
No child
should feel
alone

proud to be part of

BeeU
Emotional Health and Wellbeing

WHAT DOES BEAM LOOK LIKE?

9 Market Square, Wellington, Telford



We opened our permanent Beam venue in Wellington, Telford this summer.

Our accessible drop in space has been decorated with fresh, clean colours and fitted with comfortable furnishings to offer a laid back, informal, safe space for all.

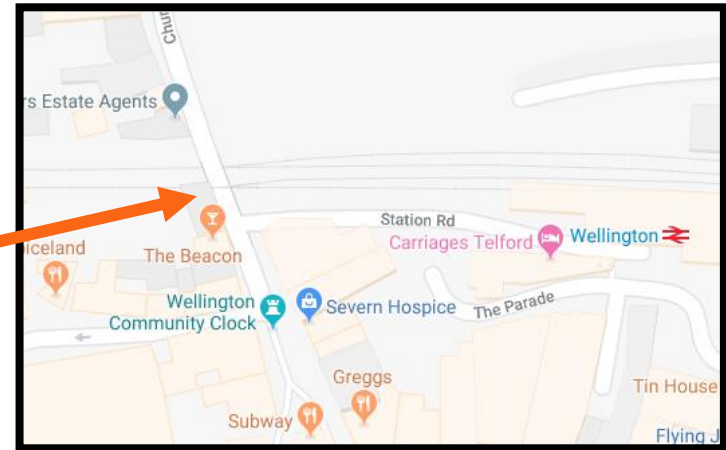
HOW TO FIND US IN WELLINGTON

9 Market Square, Wellington, Telford TF1 1BP



We are 100m from Wellington train station, next to The Beacon pub in the centre of Wellington Town Centre.

**WE ARE
HERE!**



Beam

Shropshire
Telford and Wrekin

**The
Children's
Society**

No child
should feel
alone

Bee U
Emotional Health and Wellbeing

WHERE TO PARK IN WELLINGTON

We do not have onsite parking, but there are a variety of **free** car parks in the vicinity of Wellington.

Note that some of the car parks require you to take a free ticket for your stay.

Please check individual car park for parking terms when you arrive.

SHORT STAY

Swimming pool (East & West)	TF1 1LX (4 minute walk)
Victoria Road (North)	TF1 1PZ (5 minute walk)
Nailors Row	TF1 1PY (3 minute walk)
Wilkinsons	TF1 1DT (3 minute walk)

LONG STAY (3 HOURS+)

Belmont/Tan Bank	TF1 1HJ (3 minute walk)
Wellington Station	TF1 1BY (2 minute walk)
Victoria Road (South)	TF1 1PZ (5 minute walk)
Wrekin Road	TF1 1RH (7 minute walk)
Ten Tree Croft	TF1 1EG (5 minute walk)



WHAT DOES BEAM LOOK LIKE?

Shropshire - Upstairs @ Palmers, Shrewsbury



We recognise it can be scary for a young person going to a new place for the first time.

Our drop in's are set out to be as laid back and informal as possible.

HOW TO FIND US IN SHREWSBURY

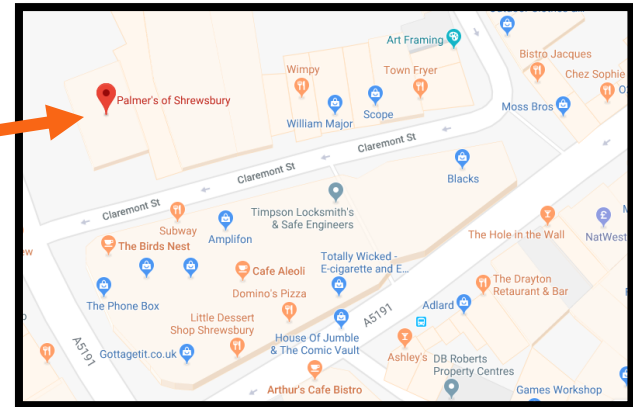
Upstairs at Palmer's Cafe, Claremont Street, Shrewsbury SY1 1QG



We are A 10 minute walk from Shrewsbury train station.

Palmer's is situated near Shrewsbury Market Hall, opposite Nationwide Building Society on Bellstone.

**WE ARE
HERE!**



Beam

Shropshire
Telford and Wrekin

**The
Children's
Society**

No child
should feel
alone

Bee U
Emotional Health and Wellbeing

VERSION 1.8 SEPTEMBER 2018

WHERE TO PARK IN SHREWSBURY

We do not have onsite parking, but there are a variety of car parks in Shrewsbury town centre.

Please check individual car park for parking terms when you arrive.

CARPARKS NEAR PALMER'S

Shrewsbury Frankwell	SY3 8HQ	(7 minute walk)
Bridge Street	SY1 1QU	(2 minute walk)
St Austins Street	SY1 1SA	(2 minute walk)
Saint Julian's Friars	SY1 1XL	(8 minute walk)
Raven Meadows	SY1 1PL	(9 minute walk)



BEAM FAQs

What if a parent/carer wants to come along without their child?

This is fine. We appreciate that people can find it difficult to discuss their circumstances while their child or children are sat with them. We welcome visits from parents and carers who want to see what the drop-in is like before they bring their child(ren).

What if a young person wants to come without their parent/carer?

We are happy for age-appropriate young people to attend Beam alone. They do not need permission to come, and we don't automatically share with anyone that they have attended. We require consent from the parent/carers of children aged 13 and under, and this is reflected on the consent form. In instances where individuals aged 13 and below attend the drop in alone, we will seek their agreement to obtain consent from a parent/carer over the phone. It is important that the parents/carers of younger children stay at drop-in while their child is attending Beam.



BEAM FAQs

What happens if a risk is identified?

Our clinical staff will raise and follow up any risk or safeguarding concern through the relevant channels, and would seek to obtain the individual's informed consent in the first instance before doing this.

Which drop in should I attend?

Shropshire and Telford & Wrekin users can access either of our drop ins in Shrewsbury or Telford.

Can I see the same person?

As we are a drop-in, we cannot guarantee that you will see the same person each visit. After each session, brief notes will be written about what has been discussed, and these will be reviewed on your next visit prior to you being seen. There shouldn't be a need to go over what you had discussed the week before.

Can we make an appointment?

No. We operate solely on a drop-in basis. This is to ensure we can be as accessible as possible to all during the hours we are open.





E-MAIL US:
AskBeam@childrenssociety.org.uk

